



Please write clearly in block capitals.

Centre number

--	--	--	--	--

Candidate number

--	--	--	--

Surname _____

Forename(s) _____

Candidate signature _____

I declare this is my own work.

A-level PHYSICS

Paper 3 Section A

Materials

For this paper you must have:

- a pencil and a ruler
- a scientific calculator
- a Data and Formulae Booklet
- a protractor.

Instructions

- Use black ink or black ball-point pen.
- Fill in the boxes at the top of this page.
- Answer **all** questions.
- You must answer the questions in the spaces provided. Do not write outside the box around each page or on blank pages.
- If you need extra space for your answer(s), use the lined pages at the end of this book. Write the question number against your answer(s).
- Do all rough work in this book. Cross through any work you do not want to be marked.
- Show all your working.

Information

- The marks for questions are shown in brackets.
- The maximum mark for this paper is 45.
- You are expected to use a scientific calculator where appropriate.
- A Data and Formulae Booklet is provided as a loose insert.

Time allowed: The total time for both sections of this paper is 2 hours. You are advised to spend approximately 70 minutes on this section.

For Examiner's Use	
Question	Mark
1	
2	
3	
4	
TOTAL	



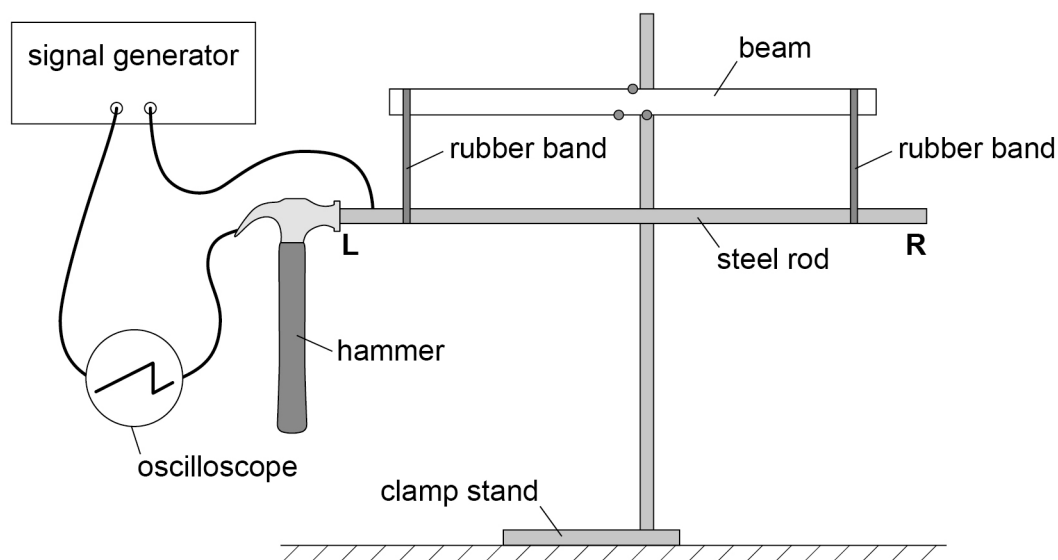
Section A

Answer **all** questions in this section.

0 1

Figure 1 shows apparatus used to measure the speed of sound in a steel rod.

Figure 1



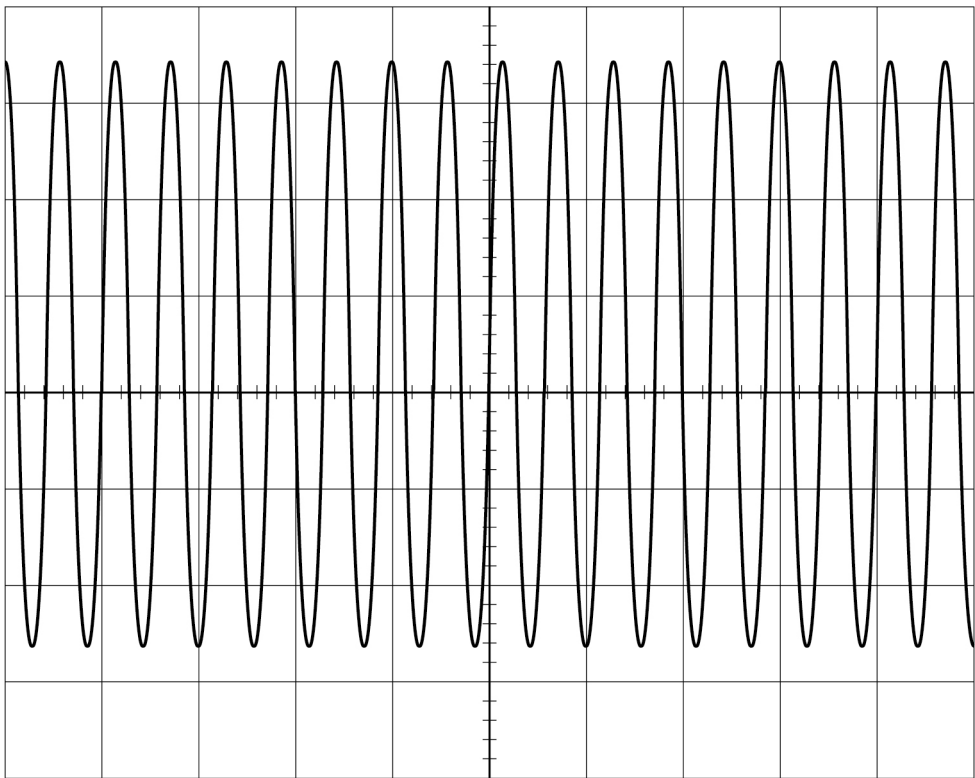
The steel rod is suspended from a beam using rubber bands. When the hammer is in contact with the end **L** of the steel rod, a circuit is completed and the signal generator is connected to the oscilloscope.

Figure 2 shows the waveform then displayed on the oscilloscope.



Do not write
outside the
box

Figure 2



0 1 . 1

Which control on the oscilloscope should be used to centre the trace vertically on the screen?
Tick (✓) **one** box.

[1 mark]

- X-shift ☐
- Y-gain ☐
- Y-shift ☐

Question 1 continues on the next page

Turn over ►



When the hammer hits end **L**, a sound wave travels along the steel rod and is reflected at end **R**.
When the wave returns to **L** the rod bounces away from the hammer and the circuit is broken.

Figure 3 shows the waveform produced by the brief contact between the hammer and **L**.
Note that the waveform has now been centred vertically.

Figure 3

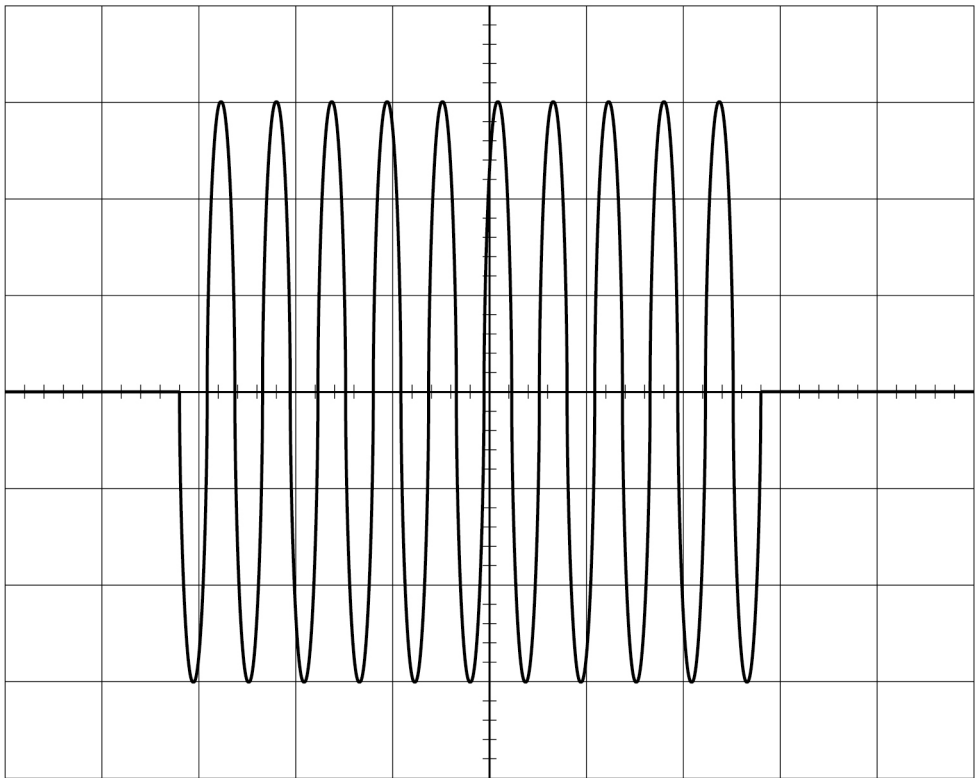
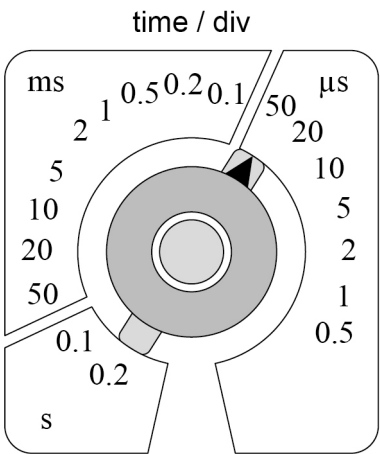


Figure 4 shows the time-base setting of the oscilloscope.

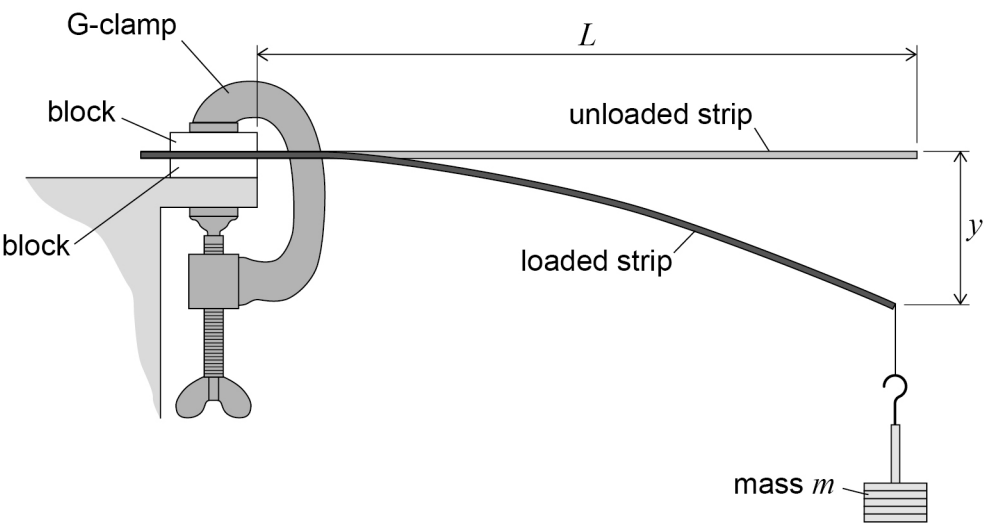
Figure 4



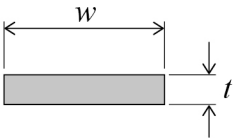
0 2

Figure 5 shows a strip of steel of rectangular cross-section clamped at one end. The strip extends horizontally over the edge of a bench.

Figure 5



end view of unloaded steel strip

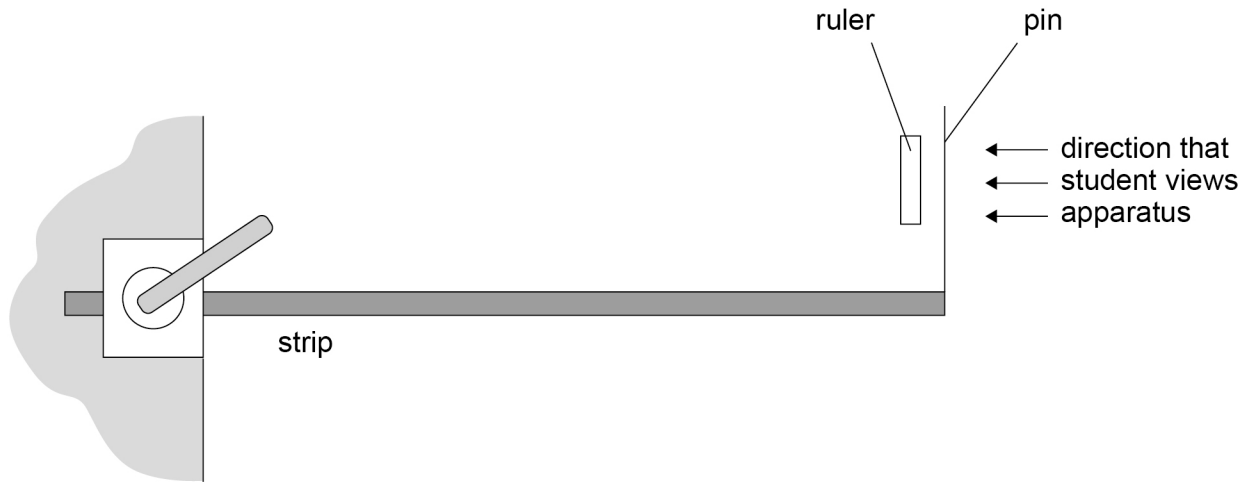


0 2 . 1

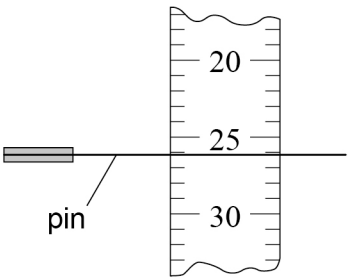
A mass m is suspended from the free end of the strip.
This produces a vertical displacement y .
A student intends to measure y with the aid of a horizontal pin fixed to the free end of the steel strip.
She positions a clamped vertical ruler behind the pin, as shown in **Figure 6**.

Figure 6

plan view



view seen by student



Explain a procedure to avoid parallax error when judging the reading indicated by the position of the pin on the ruler.
You may add detail to **Figure 6** to illustrate your answer.

[2 marks]

Question 2 continues on the next page

Turn over ►



0	2
---	---

 .

2

 It can be shown that

$$y = \frac{4mgL^3}{Ewt^3}$$

where:

L is the distance between the free end of the **unloaded** strip and the blocks

w is the width of the strip and is approximately 1 cm

t is the thickness of the strip and is approximately 1 mm

E is the Young modulus of the steel.

A student is asked to determine E using the arrangement shown in **Figure 5** with the following restrictions:

- only one steel strip of approximate length 30 cm is available
- m must be made using a 50 g mass hanger and up to four additional 50 g slotted masses
- the experimental procedure must involve only **one** independent variable
- a graphical method must be used to get the result for E .

Explain what the student must do to determine E .

[5 marks]

This image shows a blank sheet of white paper with horizontal ruling lines. The lines are evenly spaced and run across the width of the page. There are no margins, text, or other markings on the paper.

03

Conductive putty can easily be formed into different shapes to investigate the effect of shape on electrical resistance.

03.1

A student uses vernier callipers to measure the diameter d of a uniform cylinder made of the putty.

Suggest **one** problem with using callipers to make this measurement.

[1 mark]

03.2

Table 1 shows the calliper measurements made by a student.

Table 1

d_1 / mm	d_2 / mm	d_3 / mm	d_4 / mm	d_5 / mm
34.5	34.2	32.9	33.4	34.0

Show that the percentage uncertainty in d is about 2.4%.
Assume that all the data are valid.

[2 marks]



0 3 . 3

The length of the cylinder is 71 ± 2 mm.

Determine the uncertainty, in mm^3 , in the volume of the cylinder.

[4 marks]

uncertainty = _____ mm^3

Question 3 continues on the next page

Turn over ►



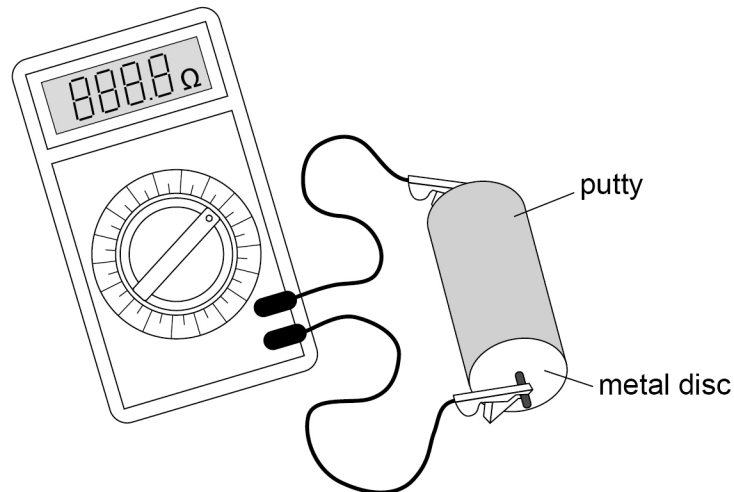
0 3 . 4

A student is given some putty to form into cylinders.

To find the resistance of a cylinder, metal discs are placed in contact with the ends of the cylinder and connected to a resistance meter.

Figure 7 shows the apparatus.

Figure 7



The student forms the putty into cylinders of different lengths, each of volume $5.83 \times 10^{-5} \text{ m}^3$.

The length L and resistance R are measured for each cylinder.

It can be shown that $R = \frac{\rho L^2}{5.83 \times 10^{-5}}$ where ρ is the resistivity of the conductive putty.

The student plots the graph shown in **Figure 8**.

Determine ρ .

State an appropriate SI unit for your answer.

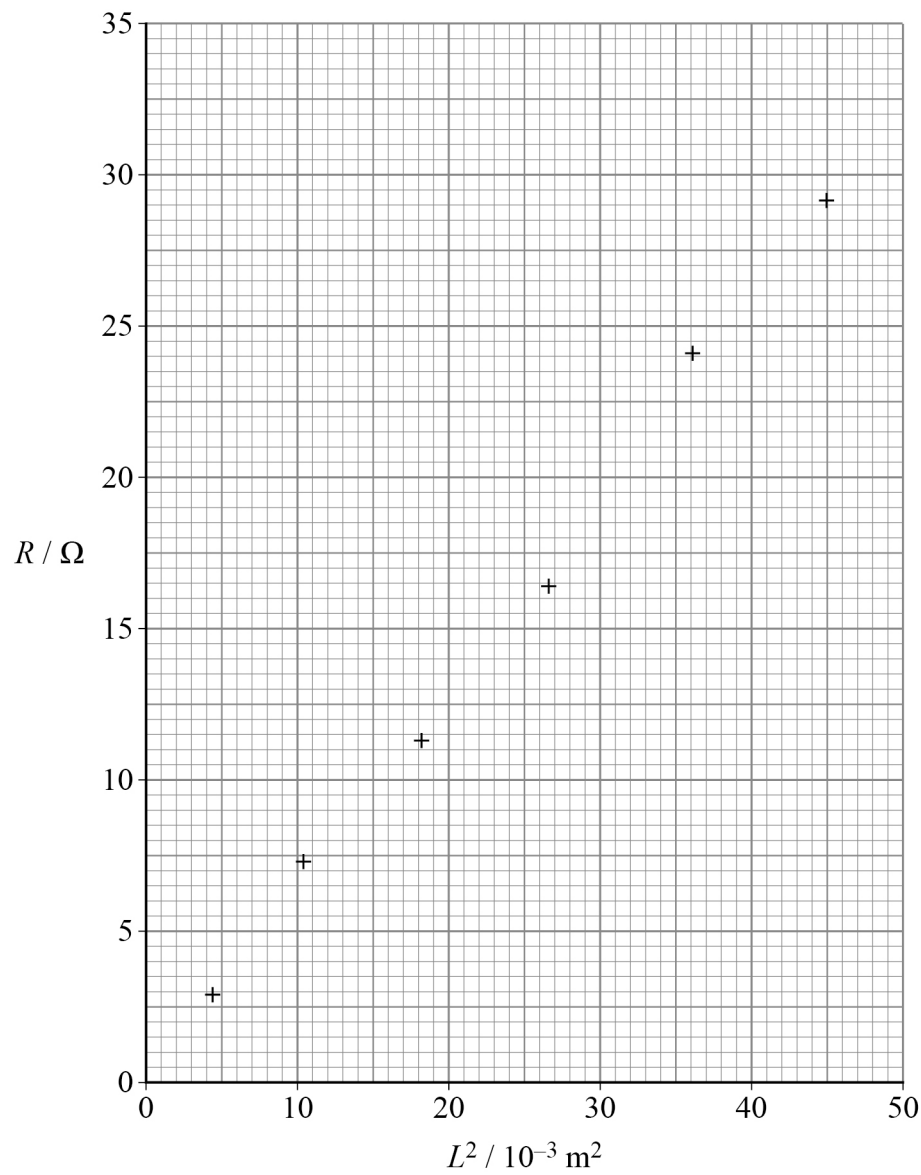
[4 marks]

$\rho =$ _____ unit = _____



Do not write
outside the
box

Figure 8



11

Turn over for the next question

Turn over ►



0 4

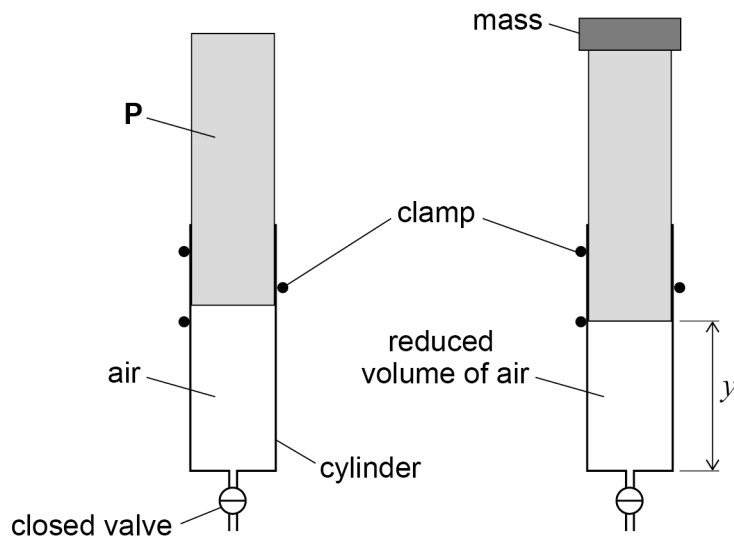
Figure 9 shows air trapped in a vertical cylinder by a valve and a piston **P**. The valve remains closed throughout the experiment.

A mass is placed on top of **P**.

P moves downwards and the volume of the trapped air decreases.

There are no air leaks and there is no friction between the cylinder and **P**.

Figure 9



The vertical distance y between the end of **P** and the closed end of the cylinder is measured.

Additional masses are used to find out how y depends on the total mass M placed on top of **P**.

Figure 10 shows a graph of these data.

0 4 . 1

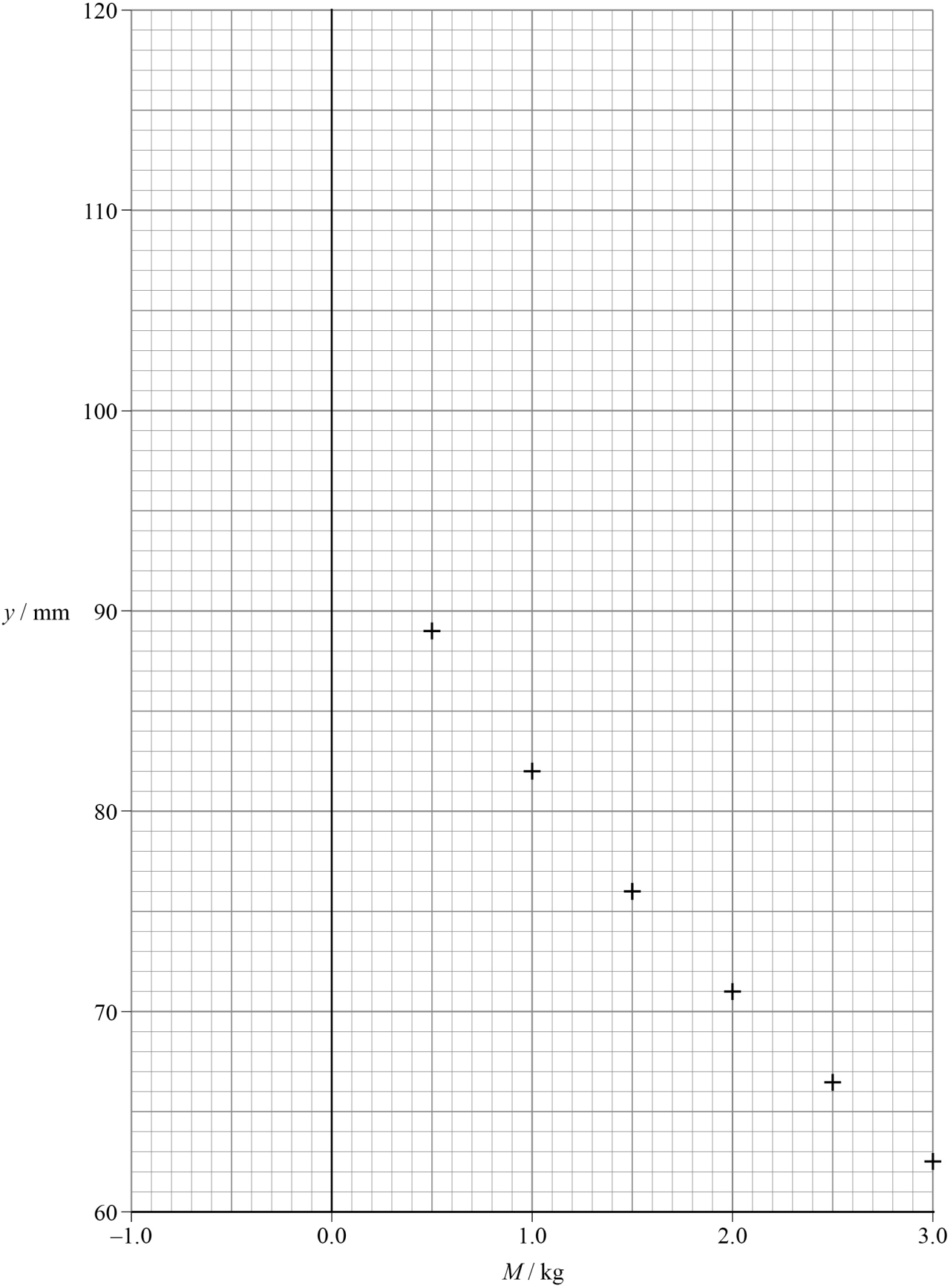
Show that y is **not** inversely proportional to M .
Use data points from **Figure 10**.

[2 marks]



Do not write
outside the
box

Figure 10



Question 4 continues on the next page

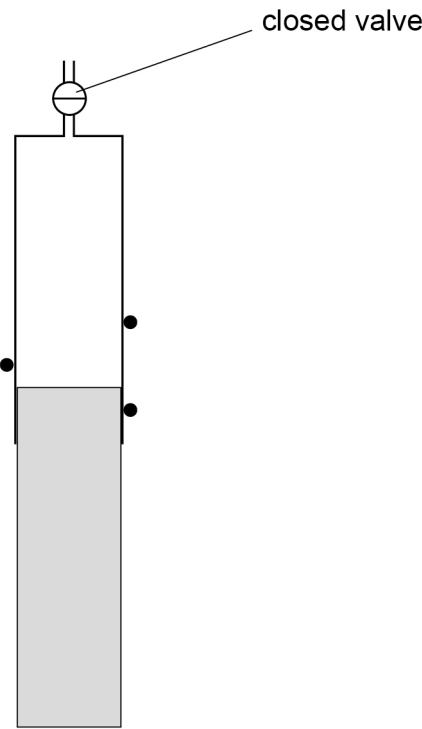
Turn over ►



0 4 . 2

The masses are removed and the cylinder is inverted.
P moves downwards without friction before coming to rest, as shown in **Figure 11**.

Figure 11



Explain why **P** does not fall out of the cylinder unless the valve is opened. **[3 marks]**



Do not write
outside the
box

0 4 . 3

The mass of **P** is 0.350 kg.

Deduce y when the cylinder is in the inverted position shown in **Figure 11**.

Draw a line of best fit on **Figure 10** to arrive at your answer.

[4 marks]

$y =$ _____ mm

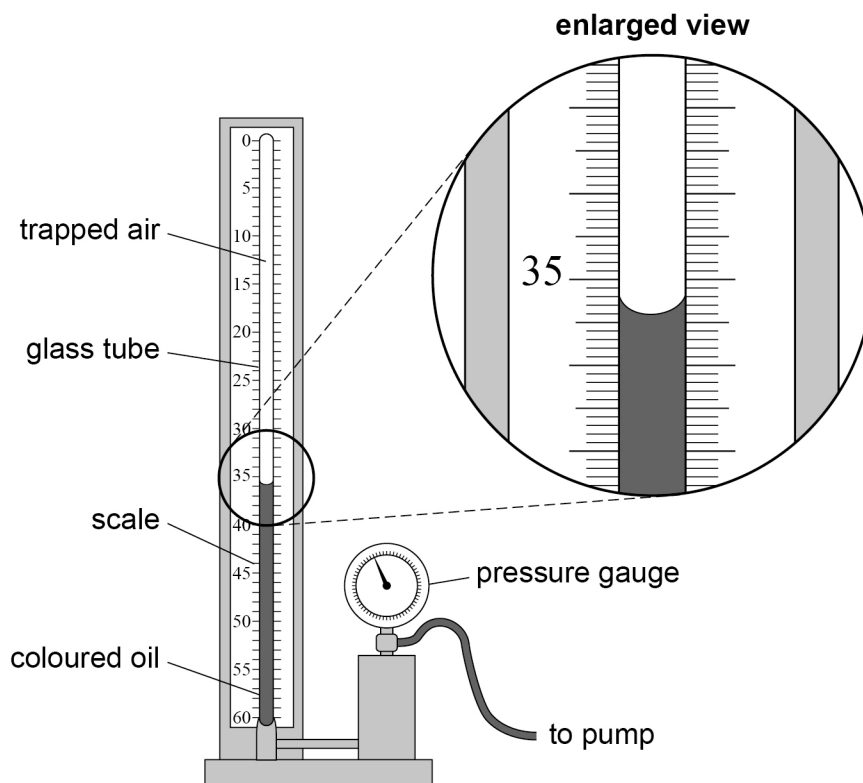
Question 4 continues on the next page

Turn over ►



Figure 12 shows apparatus used in schools to investigate Boyle's law.

Figure 12



A fixed mass of air is trapped above some coloured oil inside a glass tube, closed at the top.

A pump applies pressure to the oil and the air.

The trapped air is compressed and its pressure p is read from the pressure gauge.

0 4 . 4

A scale, marked in 0.2 cm^3 intervals, is used to measure the volume V of the air.
A student says that the reading for V shown in **Figure 12** is 35.4 cm^3 .

State:

- the error the student has made
- the correct reading, in cm^3 , of the volume.

[2 marks]

volume = _____ cm^3

Question 4 continues on the next page

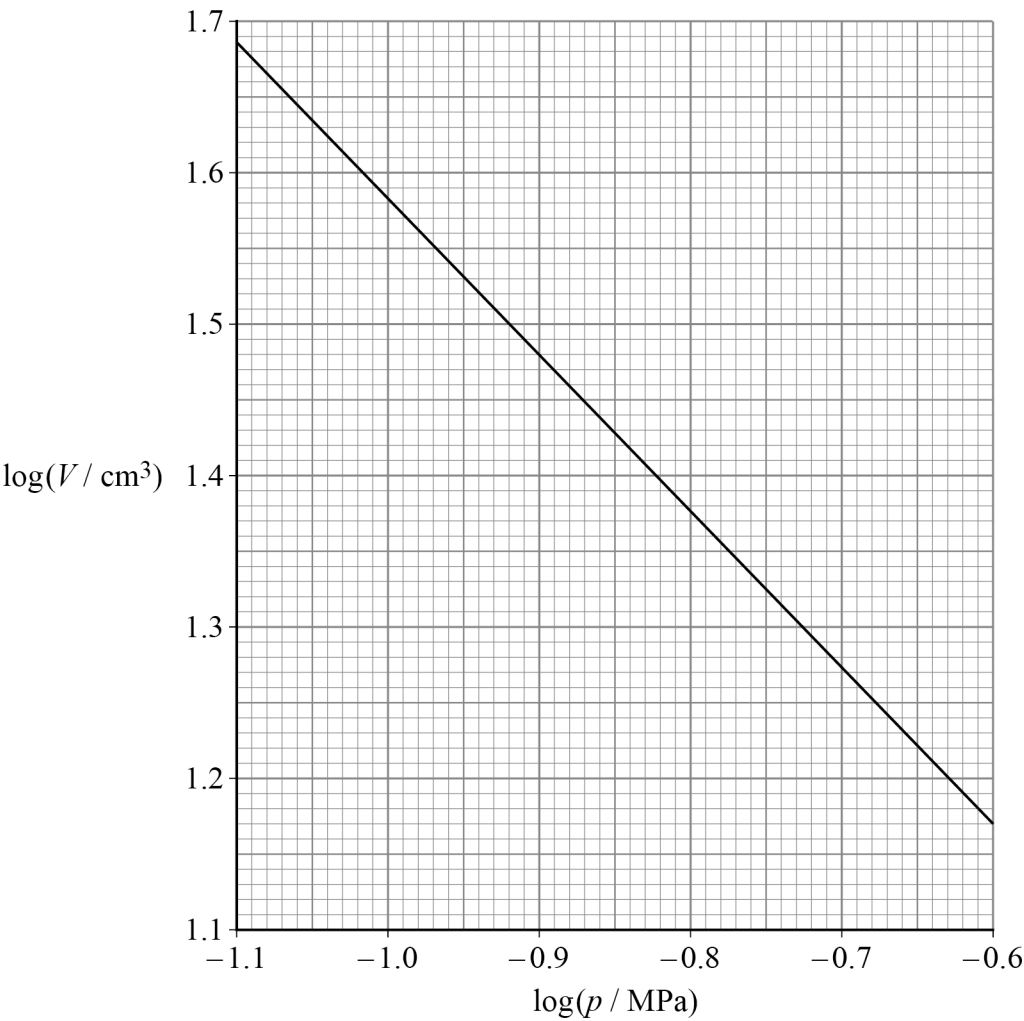
Turn over ►



0 4 . 5

Figure 13 shows data obtained using the apparatus in Figure 12.

Figure 13



Explain why the gradient of the graph in Figure 13 confirms that the air obeys Boyle's law.

[3 marks]



Do not write
outside the
box

0 4 . 6

The largest pressure that can be read from the pressure gauge is $3.4 \times 10^5 \text{ Pa}$.

Determine, using **Figure 13**, the volume V corresponding to this pressure.

[3 marks]

$V =$ _____ cm^3

0 4 . 7

State **one** property of the air that must not change during the experiment.
Go on to suggest how this can be achieved.

[2 marks]

19

END OF QUESTIONS



There are no questions printed on this page

*Do not write
outside the
box*

**DO NOT WRITE ON THIS PAGE
ANSWER IN THE SPACES PROVIDED**



[illegible]

